

A man in a dark shirt and jeans stands in a dark-colored Crestliner boat on a calm lake. The boat has "CRESTLINER" written on its side. The man is holding a fishing rod. In the foreground, a splash of water is visible. The background shows a sunset sky with orange and yellow hues. The text "MotorGuide® 2016" is overlaid on the image.

# MotorGuide® 2016



A photograph of two people fishing from a boat on a calm body of water during sunset. The sun is low on the horizon, creating a warm, golden glow. One person is standing and holding a fishing rod, while the other is kneeling and holding a fish. The boat has a Mercury outboard motor. The text "BUILT TO EARN YOU BRAGGING RIGHTS." is overlaid in large, white, distressed font.

# BUILT TO EARN YOU BRAGGING RIGHTS.

From our new, professional-caliber X5 bow mount to the workhorse R3 transom mount, we've got the motor that'll make the most of your precious time on the water. We've listened to our pro staff, and hundreds of anglers like you, and are committed to engineering and building motors that make you successful.



That means we're focused on making quiet motors, so you can maneuver stealthily to where the fish are. We're obsessed with steering technology that is precise and responsive, so you can hit your spots with accuracy and confidence. And we're passionate about reliability and durability, because we know that your trolling motor should be the least of your worries when you hit the water.


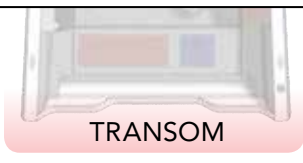
So look over our lineup for the motor that's best for how you fish. And then put it to work to bring in the catch—and the bragging rights.



## Trolling Motor Overview

MotorGuide has the trolling motor to match your boat and fishing style. For detailed information on all our motors, see pages 32-35.

SERIES		MOTOR	Mount Location	Steering	Speed Controls
		<b>X5</b>	Bow	Dual Cable VRS - Foot	Digital Variable
		<b>X3</b>	Bow	Dual Cable VRS - Foot Twist / Extendable - Hand	5-Speed 5/2 Digital Variable
		<b>Xi5</b>	Bow	Wireless Foot Pedal Wireless / GPS Remote	Digital Variable

		<b>R3</b>	Transom	Twist / Extendable - Hand	5/2 Digital Variable
---	---	-----------	---------	---------------------------	-------------------------

	<i>Wireless</i>	Bow	Wireless Foot Pedal	Digital Variable
	<i>Bulldog</i>	Transom	Single Cable - Foot	5-Speed
	<i>Great White</i>	Bow Transom	Twist / Extendable - Hand	Digital Variable



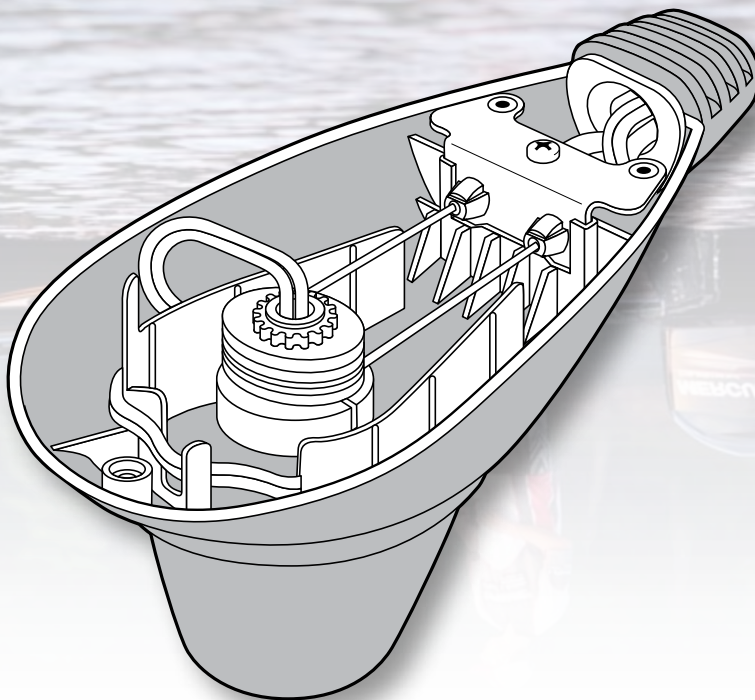




# TECHNOLOGY THAT GIVES YOU AN EDGE.

More and more anglers are taking advantage of our growing line of quiet, precise, and durable trolling motors. And that's just the start. Anglers are also embracing our proprietary technologies that help them create entirely new fishing strategies, stay on fish, and make fishing even more successful.

STEERING THAT CHANGES THE GAME. Our patented Variable Ratio Steering (VRS) technology gives anglers exceptional steering response, superior maneuverability, and maximum boat control even in the most challenging conditions. *VRS technology is standard on X3 and X5 motors.*

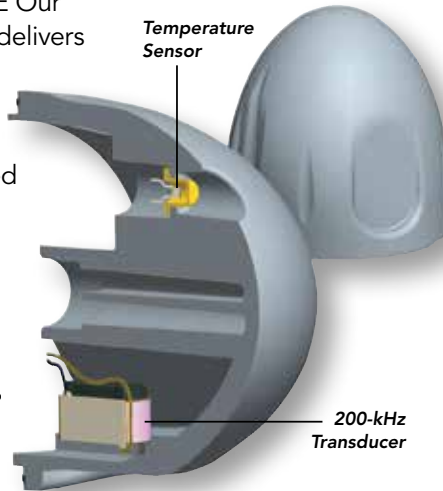






RUN THE DIGITAL DIFFERENCE. Smooth and precise variable speed control from 0% - 100% throttle and extended battery life (up to five times longer) are two reasons why more anglers are choosing motors equipped with our Digital Power Management technology. Digital's highly efficient, state of the art components run at lower temperatures, which means more power to the thrust motor. Plus, smart safeguards protect the motor and its components under severe operating conditions.

UNRIVALED SONAR PERFORMANCE Our built-in 83/200 kHz sonar transducer delivers industry-leading clarity and detail, so you can pinpoint more fish and structure. It has an integrated temperature sensor and epoxy-potted nose cone for maximum protection. Compatibility with most leading sonar brands is easy with our Sonar Adapter cables.



LOWRANCE

HUMMINBIRD

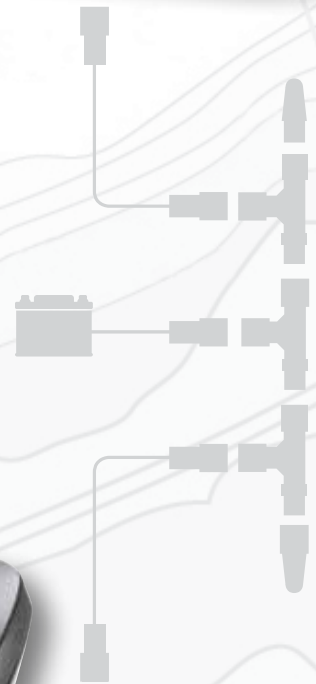


EAGLE

GARMIN

MAKE THE CONNECTION FOR ULTIMATE BOAT CONTROL.

MotorGuide and Lowrance® have brought their leading technologies together for the ultimate in boat control. All the Pinpoint GPS functionality, and more, can be operated from the touch-screen display on a compatible Lowrance unit. This seamless interface makes it easy to experience unsurpassed boat control and create new fishing strategies.



## Pinpoint<sup>GPS</sup>

TAKE BOAT CONTROL TO THE NEXT LEVEL.

Pinpoint® GPS takes boat control to the next level with an ultra-precise receiver and two digital compasses for best-in-class accuracy. Pinpoint GPS and the Xi5 wireless trolling motor work together to navigate your boat – so you can focus on fishing.



Pinpoint<sup>GPS</sup>





# A STRONG CASE FOR BEST IN CLASS.



Available Thrust (lbs.):  
55, 80, 105

Speed Control:  
Digital Variable

Shaft Length (inches):  
45, 48, 54, 60

 **Pinpoint**<sub>GPS</sub>

 **DIGITAL**



With out-of-the-box wireless capability, anglers can easily command the impressive Xi5 from anywhere on the boat. It's proven to be stealthily quiet -- with precise, responsive steering that will keep you over fish. Plus, the Xi5 is built with premium materials and robust components that can take a pounding. It's the winning combination that you expect from MotorGuide.







COMPOSITE SHAFT is made with a premium material that will bend, but won't break. It's backed by a lifetime warranty, so you can fish anywhere with confidence.

## Features

### Durable and Reliable

- Premium composite shaft has a lifetime warranty against breaking
- Electronics are encapsulated and impervious to water and dust
- Mount uses anodized aluminum
- Hardware components and linkages are stainless steel

### Precise Steering and Control

- Wireless "pro style" foot pedal for outstanding control. Saltwater Xi5 model comes with hand-held remote
- Steering transmission is highly-precise and has 50% faster rotation than the competition
- Digital variable speed control for exceptional low-speed trolling and smooth power delivery

### Quiet on the Water

- Precision steering transmission gears and low-friction bearings
- Extra rigid shaft support and low-vibration steering motor reduce noise, vibration and harshness

### Easy to Use

- Mechanism aligns and guides the motor into the stowed position and secures it in place
- LED lights in the dashboard show battery level and status of key operating modes

WIRELESS PRO-STYLE FOOT PEDAL for outstanding control from anywhere on the boat. Steering is quiet and precise with 50% faster rotation than the competition. Standard on the Freshwater Xi5.

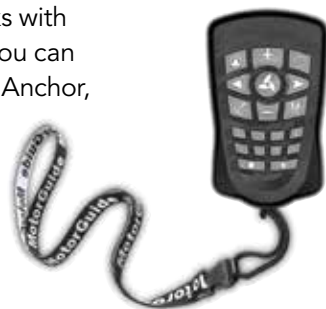


MOUNT BASE is made of corrosion-resistant anodized aluminum. A unique design guides and secures the motor into the stowed position.



## **Pinpoint**<sup>GPS</sup>

AVAILABLE PINPOINT® GPS works with the Xi5 to navigate your boat so you can focus on fishing. Features include Anchor, Heading Lock, Route Record and Cruise Control. (See page 9 for more information).



SALTWATER Xi5 comes standard with hand-held remote.



FROM ITS SEALED LOWER UNIT to its specialized coatings, the Saltwater Xi5 is specially built to resist corrosion.



**"The Xi5 is the new standard for big-water walleye fishermen."**

- Keith Kavajecz, professional angler and host of *The Next Bite*







# PINPOINT GPS. BECAUSE ACCURACY MATTERS.

Pinpoint® GPS and the  
Xi5 work together  
to navigate your boat  
with unmatched  
precision—so you  
can focus on fishing.

**TWO 2 YEAR  
WARRANTY**



 **Pinpoint**<sub>GPS</sub>





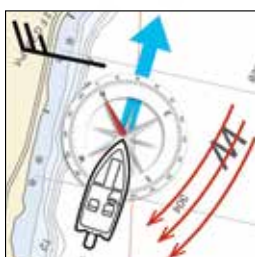
## ANCHOR

When at a desired fishing spot, you can lock in the GPS coordinate and remain "anchored" within a few feet, even in wind and current. Save up to eight anchor spots for later use.



## JOG

While in Anchor mode, use the Jog feature to shift your position five feet in any direction. You can Jog as often as you want. (Image shows one Jog left from the original Anchor position.)



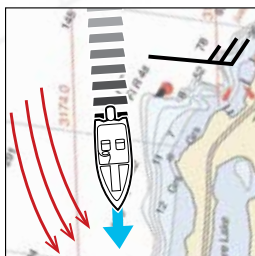
## HEADING LOCK

Choose a heading and Pinpoint GPS and the Xi5 will keep you on a straight-line course until Heading Lock is released.



## ROUTE RECORD/PLAYBACK

Record and store eight routes up to four miles long each. Return to and replay a stored route from anywhere.



## CRUISE CONTROL

While underway using Heading Lock or Route Playback, Cruise Control will maintain a constant boat speed. It even makes adjustments for wind and current.



Go to [motorguide.com](http://motorguide.com) and visit our YouTube site for more information on Pinpoint GPS.

**"The Xi5 with Pinpoint GPS gives me the quiet operation and precise control I need to stay on fish and be successful."**

- Barry Stokes, host of Fox Southwest Outdoors Report





# THE ULTIMATE IN BOAT CONTROL.

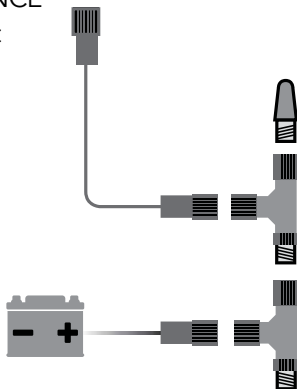
MotorGuide® and Lowrance® have combined their leading technologies for the ultimate in GPS functionality and boat control. Anglers can now control their Pinpoint® GPS-enabled Xi5 from the touch-screen display on compatible Lowrance HDS units. The intuitive user interface is remarkably easy to operate. So in no time at all, you'll be fishing like never before.







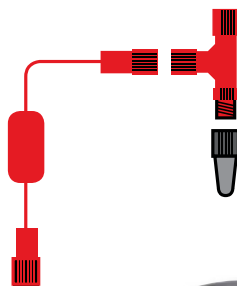
To Compatible  
LOWRANCE  
HDS Unit



Requires existing  
NMEA 2000® network  
or MotorGuide NMEA  
2000® Starter Kit  
(8M0107522)

SYSTEM REQUIREMENTS

To MotorGuide  
Xi5 with Pinpoint GPS



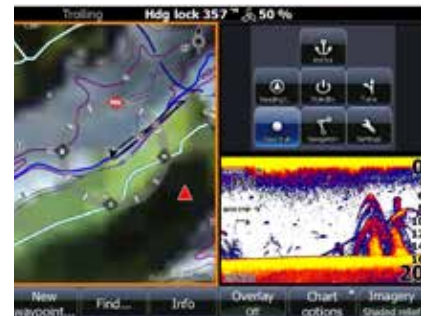
Requires MotorGuide  
Pinpoint® GPS Gateway  
Kit (8M0092085)



Go to [motorguide.com](http://motorguide.com) and  
visit our YouTube site to learn  
more about experiencing the  
ultimate in boat control.



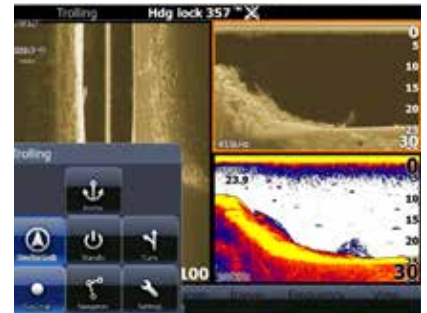
UNSURPASSED CONTROL  
AND FREEDOM TO FISH.



### Trolling Motor Status at a Glance and Enhanced Anchor Mode Functionality

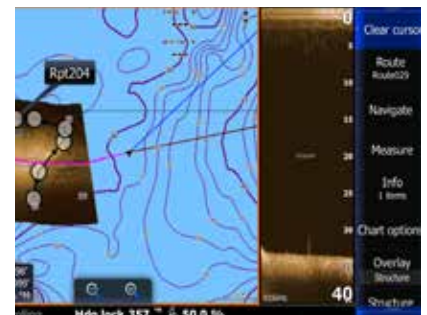
The high-definition display shows motor operating modes, prop speed, and heading. So you know exactly what's going on in real time.

It's easier than ever to anchor at a desired spot. With a simple touch of the screen, you can anchor at your current location, go to any previously stored waypoint, or Go to Cursor.



### Use Sonar History to Trackback

Return to a desired location -- like an area where fish were marked or a potential fish-holding structure -- simply by scrolling through the sonar history and using Go to Cursor. You can select from the DownScan Imaging™, StructureScan® or standard sonar to quickly put yourself back into a great spot.



### Follow Depth and Structure with Programmable Routes

User-friendly technology makes it easy to program accurate routes using charts and StructureMap. You'll have the benefit of working with current depth and structure information. Plus, you'll be able to discern bottom surface types (mud vs. rock), for an added measure of confidence.



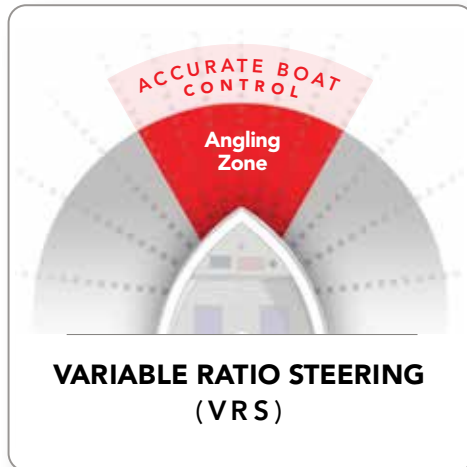
# X SERIES WITH VRS. FEARED BY FISH EVERYWHERE.

The X3 and the new X5 comprise our **X Series** of bow mount motors. These motors were developed to meet the increasing performance demands of today's serious anglers. The versatile X3 offers a leading combination of performance and value, while the professional caliber X5 is our most advanced bow mount, cable steer motor. Both motors feature our exclusive Variable Ratio Steering (VRS) technology.

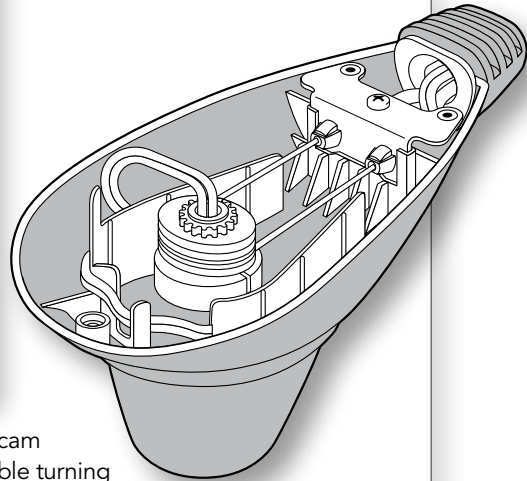




Our patented **Variable Ratio Steering (VRS)** sets the X Series apart from the competition. VRS gives anglers exceptional steering response and boat control, making it easy to accurately position your boat in the most challenging conditions. With VRS, you can stay on fish even in wind, rough water, and thick cover that typically create control problems from torque steering.



**Only from  
MotorGuide.**



An elliptical cam creates variable turning speeds that give VRS its superior performance. The patented technology delivers exceptional maneuverability and accurate boat control that keeps you in the Angling Zone.

***"The first thing fishermen will say is that VRS is a dream to run."***

- Kevin Van Dam

***"VRS helps maintain stability and boat control even in rough water."***

- Jonathon Van Dam

***"Steering is incredible. Quick and quiet response helps me to get to where I need to be."***

- Shaw Grigsby

***"Extremely responsive and quiet. Stays on track in rough water, high winds, and current."***

- Randy Howell



# FOR THE PROS. AND THE PASSIONATE.

# X5

Available Thrust (lbs.):  
55, 70, 80, 105

Speed Control:  
Digital Variable

Shaft Length (inches):  
45, 50, 60

**DIGITAL**



Pro anglers like Kevin Van Dam rely on MotorGuide for innovation that puts them in the winner's circle. That's why KVD uses the new X5, our most advanced tournament-caliber motor. It's engineered to be stealthy quiet, rock solid, and it features our patented Variable Ratio Steering (VRS) technology that keeps you in control in the most demanding fishing conditions.





**QUIET ON THE WATER.** The X5 uses premium, high-strength materials and inventive design solutions to ensure long term, quiet operation while fishing, or stowing and deploying. A composite locking pin maintains a tight, quiet fit with the mount and makes it easier to stow and deploy. Composite bushings also reduce noise. Plus, precision bearing assemblies and a locking collar eliminate shaft clicking. And our 2-blade weedless propeller spins smooth and quiet.

---

**BUILT TOURNAMENT TOUGH.** The X5 is engineered for the rigors of tournament fishing. The stable wide mount features a snap-back break-away mechanism for added protection. The mounting bracket is constructed with extruded aircraft-grade aluminum for strength and rigidity. And durable, tight-fitting composite bushings in key wear points ensure long life. The oversized stainless steel outer column is strong and corrosion-resistant. And for impact protection, the inner column is made of a premium composite with a lifetime guarantee against breaking.

---

**VARIABLE RATIO STEERING (VRS)** makes it easy to accurately position your boat, even in wind, rough water, and heavy cover that typically create torque steering problems. With VRS, you can stay in position and fight the fish, instead of your trolling motor.



Only from  
**MotorGuide.**



**QUIET OPERATION.** Shock-absorbing polymer washers, and composite locking pin and bushings make the X5 quiet on the water.



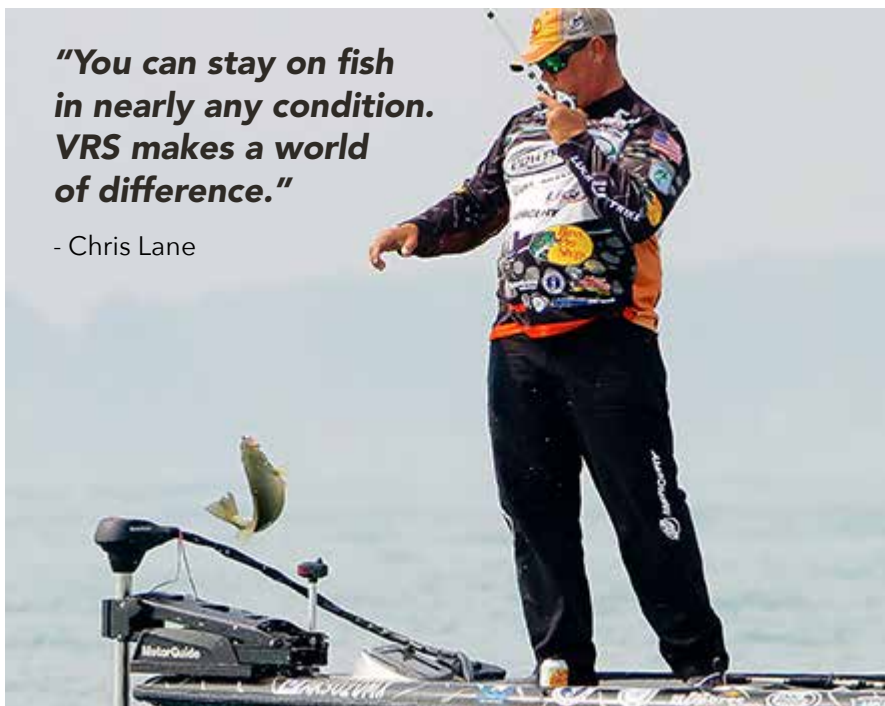
**ROCK SOLID CONSTRUCTION.** Wide breakaway mount, oversized stainless steel outer shaft, and premium composite inner shaft for strength and durability.



**NO FLEX** composite foot pedal controls the Variable Ratio Steering (VRS) technology.

***"You can stay on fish  
in nearly any condition.  
VRS makes a world  
of difference."***

- Chris Lane





# THE PERFORMANCE AND VALUE STANDARD.

# X3

Available Thrust (lbs.):  
45, 55, 70

Speed Control:  
5 Speed  
5/2  
Digital Variable

Shaft Length (inches):  
36, 45, 50

 **DIGITAL**



The X3 is a rugged trolling motor constructed with durable components and loaded with premium features, like our patented Variable Ratio Steering (VRS) technology. It comes in foot- and hand-operated models, with available Digital power management technology for smooth operation and longer battery life. The X3's winning combination of performance and value makes it a popular choice for serious anglers.







Only from  
MotorGuide.

VARIABLE RATIO STEERING (VRS) makes it easy to accurately position your boat, even in wind, rough water, and heavy cover that typically create torque steering problems. With VRS, you can stay in position and fight the fish, instead of your trolling motor.

COMPOSITE INNER SHAFT is made with a premium material that will bend, but won't break. The outer shaft is large-diameter, corrosion-resistant stainless steel for added strength (foot-operated models). It's backed by a lifetime warranty, so you can fish anywhere with confidence.



AIRCRAFT-  
GRADE  
ALUMINUM  
MOUNT features  
stainless steel bushings in  
key wear areas for long-term  
performance. Tight-fitting  
components and fewer  
metal-to-metal interfaces  
make the X3 a quiet  
performer during operation  
and while stowing and  
deploying.



*The X3 is available  
in hand-operated Freshwater  
and corrosion-resistant  
Saltwater models*

## Features

### Precise Steering and Control

*(foot-operated model)*

- Variable Ratio Steering delivers precise steering and boat control
- Premium dual-cable, pull-pull steering
- Ergonomic, heel-toe operated foot pedal is easy to use

### Quiet on the Water

- Tight-fitting components and fewer metal-to-metal interfaces
- Collar keeps precision bearings secure for quiet operation and low wear
- Smooth-spinning 2-blade weedless propeller

### Durable and Reliable

- Stable, wide-stance mount is constructed using rigid aircraft-grade aluminum
- Inner shaft is made with a premium composite with a lifetime guarantee against breaking
- Stainless steel bushings and precision bearings ensure long-term performance
- Specially formulated coating and epoxy-sealed lower unit for corrosion protection

### Easy to Use

- Hinged "door" for easy motor height adjustment and removal
- Digital foot-control models feature a lighted steering indicator illuminated with LEDs. The long-lasting LEDs provide quick and clear visibility for night fishing
- Easy to stow and deploy



# BUILT TO WORK OVERTIME.

# R3

Available Thrust (lbs.):

30, 40, 45, 55

Speed Control:

5/2

Digital Variable

Shaft Length (inches):

18, 30, 36, 42

 **DIGITAL**

 **TWO YEAR WARRANTY**

A choice of 5 speeds forward and 2 speeds reverse or Digital variable speed control makes the R3 even more popular in the transom mount category. The refined R3 combines a durable, multi-position aluminum alloy mount, and solid steel and aluminum 3.5" lower unit for versatility, durability, and value.







**DURABLE LOWER UNIT**  
is constructed of solid steel and aluminum with a powder coat finish.

## Features

- 5 speeds forward and 2 reverse, or Digital Variable speed control
- Reversible motor head for bow or transom mount operation
- Ergonomic, extending handle puts control at your fingertips
- Solid aluminum and steel lower unit with powder coat finish
- Stainless steel propeller shaft and 2-blade or 3-blade prop
- Quiet operation lets you get closer to the fish
- Powerful, 3.5" lower unit runs cooler and lasts longer

**RUN THE DIGITAL DIFFERENCE.** Smooth and precise variable speed control from 0% - 100% throttle and extended battery life (up to five times longer) are two reasons why more anglers are choosing motors equipped with our Digital power management technology. Digital's highly efficient, state of the art components run at lower temperatures, which means more power to the thrust motor. Plus, smart safeguards protect the motor and its components under severe operating conditions.



**INDUSTRY-LEADING TRANSOM MOUNT.** Found on the 45 and 55 lb. thrust models, the R3 transom Wide-Bite® mount features aluminum alloy construction with a rugged powder coat finish. The stainless steel lock pin provides the ultimate in strength, rigidity, and durability, and ensures solid engagement in all seven positions.



**TWIST-TILLER OPERATION.** Finger-tip control of 5 speeds forward and 2 reverse, or Digital Variable speed control for increased precision and longer battery life. Longer, ergonomic extending handle.



**PROPS.** Go shallower, faster and quieter with our tapered hub, 2-blade or 3-blade weed-free prop.

*The R3 is available in Freshwater and Saltwater models*



# TAKE CONTROL FROM ANYWHERE ON THE BOAT.

## Wireless

---

Available Thrust (lbs.):  
45, 55, 75

---

Speed Control:  
Digital Variable

---

Shaft Length (inches):  
48, 54, 60

---

 **DIGITAL**

---



The Wireless Digital Series comes standard with a wireless foot pedal and the versatility to use up to four remote inputs, including the optional hand-held remote. Stowing and deploying the Wireless is smooth and easy. And with a built-in removable mount, rough-water lower-unit cradle, and an integrated battery indicator, you'll be more than ready to command its versatile "out of the box" wireless performance.





RUN THE DIGITAL DIFFERENCE. Smooth and precise variable speed control from 0% - 100% throttle and extended battery life (up to five times longer) are two reasons why more anglers are choosing motors equipped with our Digital power management technology. Digital's highly efficient, state of the art components run at lower temperatures, which means more power to the thrust motor. Plus, smart safeguards protect the motor and its components under severe operating conditions.



WIRELESS FREEDOM is what MotorGuide's exclusive high-frequency Wireless Foot Pedal is all about. On/Off, Right/Left and Faster/Slower wireless motor commands make it a cinch to master for novice and expert alike. Simple, fast and precise wireless boat positioning from anywhere on the deck while sitting or standing.



QUICK-RELEASE MOUNTING PLATE makes installation fast and simple. Made from tough extruded aluminum, the mounting plate locks in place to form a solid connection and uses a common hole pattern. You can stow your motor in your vehicle while trailering to avoid road abuse, or quickly transfer it to a secure location when you can't watch the boat. This patented piece of equipment comes standard on Wireless motors.



BUILT-IN BATTERY INDICATOR includes four levels of charge data to maximize fishing time.

## Features

- Wireless value is delivered with a built-in receiver. You're free to add to your system
- Mix and match up to four Wireless Hand-holds or Wireless Foot Pedals in any combination
- Perfect for tournament situations and/or tough bites that require teamwork, precise boat control, and accurate bait presentations
- One-hand stow and deploy is easy and ultra-smooth. A light pull, and you're ready to make a run to your next spot

*Optional Hand-held Remote*





# BIG FIGHT IN A SMALL PACKAGE.

## ***Bulldog***

Available Thrust (lbs.):  
40, 54

Speed Control:  
5 Speed

Shaft Length (inches):  
30



The tough little Bulldog is specialized for small-boat, transom-mount applications. It comes in 40 lb. and 54 lb. thrust for plenty of power. Its five forward speeds are controlled by a foot pedal joined by a 63" cable. Durable and reliable 360° rack-and-pinion steering and 30" aluminum shaft.







VERSATILE  
TRANSOM MOUNT  
can be modified for  
backtrolling from the  
bow

TOUGH 30" ALUMINUM  
SHAFT is perfect for small  
boat applications



FOOT PEDAL CONTROLS  
5 speeds and durable  
rack-and-pinion steering

MACHETE III propeller  
gets you in the shallows  
quieter and faster



## Features

- Durable and reliable 360° rack-and-pinion steering
- Five speeds forward with foot pedal control
- 63" cable for more placement options
- Quiet and smooth operation gets you closer to fish
- Versatile and adjustable transom mount





# TAKE IT TO THE EXTREMES.

## Great White

Available Thrust (lbs.):  
82, 109

Speed Control:  
Digital Variable

Shaft Length (inches):  
45, 50, 60

 **DIGITAL**



Heat? Corrosion? Big-water pounding? All in a day's work for these powerful predators. Our Great White edition is the choice of saltwater guides, competitive anglers, and die-hards around the world. From the specially formulated coating, to the epoxy-sealed lower unit, to the stainless steel shaft – the durability starts on the outside.





UPGRADE TO THE GREAT WHITE MACHETE® III GLASS-FILLED PROPELLER. Go faster, go shallower, go quieter with MotorGuide's specially formulated material that's stiffer and more rugged. Get the durability that the pros demand. Sold as an option.



EATIN' UP THE ULTIMATE TEST. Shallow-water saltwater guides and anglers on the Saltwater Redfish circuits choose Great White Digital for a simple reason – they're the most dependable trolling motors out there. Long days on the flats are the ultimate test of your equipment, and these motors don't just pass it, they eat it up and come back for more. MotorGuide invented the saltwater-specific trolling motor and we continue leadership today as the choice of guides and avid saltwater anglers around the world.



Bow Mount

GREAT WHITE is available in bow mount and transom mount models.



Transom Mount

MOTORGUIDE® DIGITAL monitors your motor's amp draw, heat dissipation, output, and other vital parameters. The result is a motor that's cooler and more durable. A self-contained, sealed module in the lower unit brings all vital motor components together in one protected location, eliminating outdated analog circuit boards and related componentry.



ERGONOMIC extending handle puts control at your fingertips.



## Features

- Digital power in 82 to 109 pounds of thrust with 24 or 36-volt power options
- Ultra pure aluminum coating "self-heals" from scratches providing added protection in abrasive shallow water use
- Stainless steel shaft, fasteners and control cables
- Anodized aluminum mounts and components prevent galvanic corrosion through our specialized multi-step process
- Completely sealed Digital module is protected from heat, moisture, corrosion and shock
- Improved efficiency results in extended battery life and more time on the water
- Soft-start feature ramps up power, creating smoother initial motion
- Quiet, smooth operation lets you get closer to the fish
- Machete® III propeller is quieter than two-blade designs for ultimate shallow water performance
- Compact, lightweight lower units
- Saltwater anode for added corrosion protection



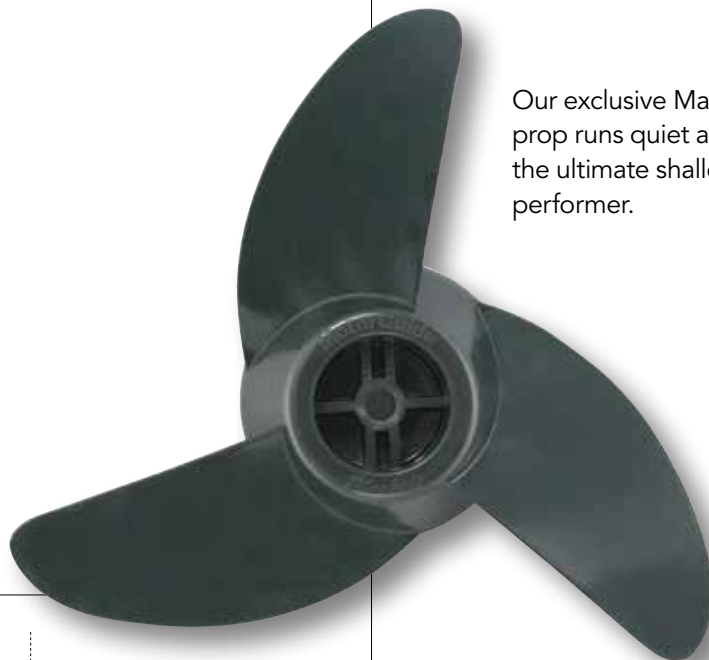
# FINE-TUNED PROPS.

MotorGuide® offers a complete line of performance-tuned propellers to enhance your motor's all-around performance in any application. MotorGuide custom props were designed with the input of the Mercury® Propeller engineers and include weedless, power, and shallow water options.



The Safari™ weedless delivers quiet power.





Our exclusive Machete® III prop runs quiet and is the ultimate shallow-water performer.

2-Blade Power Prop  
Hub Size: 3"  
Application: Power & Efficiency  
MGA0476B



2-Blade Power Prop  
Hub Size: 3.5"  
Application: Power & Efficiency  
MGA0495B



Safari™ Weedless  
Hub Size: 3.5"  
Application: Weedless & Power  
8M0028330



3-Blade Aluminum Machete  
Hub Size: 3.5"  
Application: Shallow & Durability  
MGA087M



3-Blade Machete III Grey  
Glass-Filled  
Hub Size: 3.5"  
Application: Shallow & Durability  
MGA089G



Ninja™ Prop Wrench  
Comes complete with spare prop nut and two prop pins, allowing fast prop changes.  
MGA050B6



3-Blade Machete III Black  
Hub Size: 3.5"  
Application: Speed & Efficiency  
MGA089B



3-Blade Machete III White  
Glass-Filled  
Hub Size: 3.5"  
Application: Speed & Efficiency  
MGA089W



## Xi5

**Xi5 QUICK-RELEASE BRACKET**  
Composite, White  
**8M0092063**



Aluminum, Black  
**8M0092064**



**Xi5 WIRELESS REMOTE**  
Before operation, the hand-held remote must be synced with the trolling motor.  
2.4 GHZ  
**8M0092068**



**Xi5 WIRELESS FOOT PEDAL**  
Intuitive, pro-style "heel-toe" operation controls steering, makes it extremely quiet, precise, and 50% faster than the competition. 2.4 GHZ  
**8M0092069**



## PINPOINT® GPS

**PINPOINT® GPS NAVIGATION SYSTEM**  
Ultra-precise GPS receiver and two digital compasses for incredibly accurate performance.  
**8M0092070**



**PINPOINT® GPS REPLACEMENT REMOTE**  
**8M0092071**



**NMEA 2000® STARTER KIT**  
For setting up an NMEA 2000® network required for a Pinpoint® GPS Gateway connection.  
**8M0107522**



**PINPOINT® GPS GATEWAY KIT**  
Seamlessly integrates MotorGuide® and Lowrance® technologies. **8M0092085**



## RIGGING

**TROLLING MOTOR POWER PLUG**

Two-prong 12-, 24- or 36-volt power plug provides a solid, safe connection.  
**8M4000953**



**TROLLING MOTOR POWER RECEPTACLE**  
Matching two-prong 12-, 24- or 36-volt trolling motor receptacle for bow-panel installation. **8M4000954**

**SONAR ADAPTERS WITH 7-PIN BLUE/GRAY CONNECTOR**

The Sonar Adapters are designed to provide clean, clear signals for the leading sonar brands. For use with MotorGuide motors with blue/gray 7-pin sonar connector.



**LOWRANCE (6-Pin)**  
**8M4001959**



**GARMIN (6-Pin)**  
**8M4001961**



**VEXILAR (3-Pin)**  
**8M4001960**



**HUMMINBIRD (7-Pin)**  
**8M4001962**

**8-GAUGE BATTERY CABLE AND TERMINALS WITH 50-AMP MANUAL RESET BREAKER**

Protect your investment with this 50-amp manual reset breaker and heavy-duty 8-ga. battery cable and terminal.  
**MM309922T**



**MANUAL RESET BREAKERS**  
Protect your motor and boat wiring from connection failures. Simple, durable push button reset.



(50-amp) **MM5870**



(60-amp) **8M0064076**

**QUICK CLAMP BATTERY CONNECTORS**

Heavy-duty connectors for quick battery removal, charging, and storage. **8M0092072**



**TROLLING MOTOR REPLACEMENT PLUG**  
Use with 16- to 8-gauge wire. Easy to connect with Trolling Motor Receptacle 8M0092066.  
**8M0092065**



**TROLLING MOTOR RECEPTACLE**  
Use with 10-gauge and 8-gauge wire. For 6-gauge wire, use Adapter 8M0092067.  
**8M0092066**



**TROLLING MOTOR RECEPTACLE – 6 GAUGE ADAPTER**  
Accepts 6-gauge wire. For use with Trolling Motor Receptacle 8M0092066.  
**8M0092067**





## WIRELESS

**WIRELESS FOOT PEDAL** Simple, fast, and precise wireless boat positioning from anywhere on the deck. For use with all Wireless Series trolling motors. **8M4000952**



**WIRELESS SERIES ANTI-SLIP RUBBER FOOT PEDAL PADS**  
**8M0029474**



**WIRELESS HAND-HELD REMOTE**  
Take control from anywhere in the boat with our exclusive high-frequency remote. For use with Wireless Series trolling motors.  
**M887657**

### WIRELESS MOUNTING PLATE

If you own multiple boats, take advantage of the quick-release Wireless Mounting Plate and swap your Wireless motor from boat to boat – it saves time and money.  
**8M4000975**



### WIRELESS MOUNTING PLATE COVERS

Snap in place and clean up the deck.



**SALTWATER WHITE**  
**8M4000292**

**FRESHWATER BLACK**  
**MGA506A1**

## MOUNTING

### UNIVERSAL QUICK RELEASE BRACKET

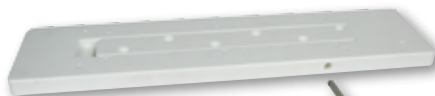
Quickly attach or remove any cable or electric steer motors.  
**8M0095972**



### UNIVERSAL QUICK RELEASE BRACKET TOP PLATE

Flexibility to quickly and easily switch between motors.  
**8M0095973**

**REMOVABLE MOUNT** Makes motor removal and installation fast and simple. Universal hole patterns. Fits Gator® Flex 360, 20.8, 21, 21R, 24 and 24R mounts.



**MGA515A2**



**MGA501A2**

### UNIVERSAL EXTENSION HANDLES

Locks into place to fit transom-mount trolling motors and most popular tiller engines.



**MGA504A1**



**MGA503A1**

### MOUNTING ISOLATORS

Absorbs shock and protects electronics. Four per package. **MGA015PB6**



**BOUNCE BUSTER™ II**  
For Tour and X5 Mounts.  
**MGA097B6**

### TROLLING MOTOR MOUNTING KIT

Absorbs shock and protects electronics. Steel bolts and washers fit all trolling motors. Four per package. **8M4000873**



### MOTORGUIDE® RAM® MOUNT

**TROLLING MOTOR STABILIZERS** Considered essential by northern anglers and saltwater fishermen alike. Prevents damage to motor, shaft and head in rough water conditions.

### RAIL MOUNT BASE

**8M4000976**

### STANDARD

**8M4000977**

### LONG

**8M4000978**



### TIE DOWN STRAPS

The adjustable hook and loop strap keeps your trolling motor safely secured while trailering or on the water.

**MGA507A1**



# APPAREL



**PERFORMANCE CAP**  
100% polyester. Mid-to-low profile.  
Structured. Flex fit 7" to 7½".  
\$18 each



**MULTI-TOOL  
KEYCHAIN**  
Approximate size:  
1 1/8" x 2 3/8".  
\$6 each



**SPORT VISOR**  
Dry Zone moisture-wicking.  
Adjustable Velcro® closure.  
\$14 each



**BACKPACK**  
Top-entry padded laptop  
compartment. Media pocket.  
Organization panel. Dual side  
beverage/accessory holsters.  
Adjustable shoulder straps.  
Dimensions:  
19.25" H x 13" W x 9.5" D.  
Fits most 15" laptops.  
\$55 each



**MESH BACK CAP**  
Unstructured, low profile.  
Adjustable Velcro closure.  
\$11 each



**LOGO TEE**  
100% cotton.  
Sizes S-3X.  
\$11 each



**SOLAR SHIELD FISHING TEE**  
Moisture wicking 100% polyester  
with UPF 30+ Sun Protection.  
Sizes S-2X. \$19 each



**FLEECE VEST**  
7.7 oz, 100% polyester  
anti-pill fleece.  
\$45 each



**NEOPRENE KOOZIE**  
Available in red or black.  
\$2.25 each



**COLOR BLOCK POLO**  
4.3 oz. moisture  
wicking 100% polyester.  
Sizes M-3X. \$34 each



**HOODED SWEATSHIRT**  
9.5oz, 80/20 heavyweight  
sweatshirt. Front pouch pocket.  
Sizes M-2X. Add \$2.00 for 2X.  
\$34 each

Order official MotorGuide merchandise by calling 1-877-302-6372 or visit us at [motorguide.com](http://motorguide.com)



# SERVICE

PREMIER SERVICE CENTERS. For a complete list of service centers near you, visit [motorguide.com/support/dealers/locator](http://motorguide.com/support/dealers/locator) or contact consumer affairs at (920) 929-5040.



Xi5 - Pg 6



X5 - Pg 14



X3 - Pg 16



R3 - Pg 18



Wireless - Pg 20



Bulldog - Pg 22



Great White® - Pg 24



Props - Pg 26



Accessories - Pg 28-29

# MotorGuide Motor Selection Chart - Freshwater Motors

Model	Part Number	Mount	Peak Thrust	Shaft	Shaft Material	Max AMP Draw	Volts	Speed Control
<b>X5 FOOT-CONTROL BOW MOUNT</b>								
X5-55FW FB 45" DIGITAL 12V	940500010	X5 Mount	55	45"	Composite	52	12	Digital Variable
X5-55FW FB 45" DIGITAL 12V SNR	940500080	X5 Mount	55	45"	Composite	52	12	Digital Variable
X5-70FW FB 45" DIGITAL 24V	940500170	X5 Mount	70	45"	Composite	42	24	Digital Variable
X5-70FW FB 45" DIGITAL 24V SNR	940500180	X5 Mount	70	45"	Composite	42	24	Digital Variable
X5-80FW FB 45" DIGITAL 24V	940500020	X5 Mount	80	45"	Composite	56	24	Digital Variable
X5-80FW FB 45" DIGITAL 24V SNR	940500090	X5 Mount	80	45"	Composite	56	24	Digital Variable
X5-80FW FB 50" DIGITAL 24V	940500030	X5 Mount	80	50"	Composite	56	24	Digital Variable
X5-80FW FB 50" DIGITAL 24V SNR	940500100	X5 Mount	80	50"	Composite	56	24	Digital Variable
X5-80FW FB 60" DIGITAL 24V	940500040	X5 Mount	80	60"	Composite	56	24	Digital Variable
X5-80FW FB 60" DIGITAL 24V SNR	940500110	X5 Mount	80	60"	Composite	56	24	Digital Variable
X5-105FW FB 45" DIGITAL 36V	940500050	X5 Mount	105	45"	Composite	36	36	Digital Variable
X5-105FW FB 45" DIGITAL 36V SNR	940500120	X5 Mount	105	45"	Composite	36	36	Digital Variable
X5-105FW FB 50" DIGITAL 36V	940500060	X5 Mount	105	50"	Composite	36	36	Digital Variable
X5-105FW FB 50" DIGITAL 36V SNR	940500130	X5 Mount	105	50"	Composite	36	36	Digital Variable
X5-105FW FB 60" DIGITAL 36V	940500070	X5 Mount	105	60"	Composite	36	36	Digital Variable
X5-105FW FB 60" DIGITAL 36V SNR	940500140	X5 Mount	105	60"	Composite	36	36	Digital Variable
<b>X3 FOOT-CONTROL BOW MOUNT</b>								
X3-45FW 36" 12V	940200050	X3 Mount	45	36"	Composite	38	12	5
X3-45FW 45" 12V	940200060	X3 Mount	45	45"	Composite	38	12	5
X3-45FW 50" 12V	940200070	X3 Mount	45	50"	Composite	38	12	5
X3-55FW 36" 12V	940200080	X3 Mount	55	36"	Composite	52	12	5
X3-55FW 45" 12V	940200090	X3 Mount	55	45"	Composite	52	12	5
X3-55FW 50" 12V	940200100	X3 Mount	55	50"	Composite	52	12	5
X3-70FW 45" 24V	940200110	X3 Mount	70	45"	Composite	42	24	5
X3-70FW 50" 24V	940200120	X3 Mount	70	50"	Composite	42	24	5
X3-55FW 36" 12V DIGITAL	940200220	X3 Mount	55	36"	Composite	52	12	Digital Variable
X3-55FW 45" 12V DIGITAL	940200170	X3 Mount	55	45"	Composite	52	12	Digital Variable
X3-70FW 45" 24V DIGITAL	940200180	X3 Mount	70	45"	Composite	42	24	Digital Variable
<b>X3 HAND-CONTROL BOW MOUNT</b>								
X3-45FW 50" HB 12V, HAND	940200200	X3 Mount	45	50"	Composite	44	12	5/2
X3-55FW 50" HB 12V, HAND	940200210	X3 Mount	55	50"	Composite	49	12	5/2
X3-55FW 50" HB 12V DIGITAL, HAND	940200190	X3 Mount	55	50"	Composite	49	12	Digital Variable
X3-55FW 50" HB 12V DIGITAL PONTOON	940200230	X3 Mount	55	50"	Composite	49	12	Digital Variable
<b>Xi5 WIRELESS ELECTRIC STEER BOW MOUNT</b>								
Xi5-55FW 45" 12V FP SNR GPS	940800210	Xi5 Mount	55	45"	Composite	52	12	Digital Variable
Xi5-55FW 48" 12V FP	940800170	Xi5 Mount	55	48"	Composite	52	12	Digital Variable
Xi5-55FW 48" 12V FP SNR GPS	940800211	Xi5 Mount	55	48"	Composite	52	12	Digital Variable
Xi5-55FW 54" 12V FP	940800180	Xi5 Mount	55	54"	Composite	52	12	Digital Variable
Xi5-55FW 54" 12V FP SNR GPS	940800220	Xi5 Mount	55	54"	Composite	52	12	Digital Variable
Xi5-80FW 45" 24V FP SNR GPS	940800270	Xi5 Mount	80	45"	Composite	56	24	Digital Variable
Xi5-80FW 54" 24V FP	940800080	Xi5 Mount	80	54"	Composite	56	24	Digital Variable
Xi5-80FW 54" 24V FP SNR GPS	940800230	Xi5 Mount	80	54"	Composite	56	24	Digital Variable
Xi5-80FW 60" 24V FP	940800090	Xi5 Mount	80	60"	Composite	56	24	Digital Variable
Xi5-80FW 60" 24V FP SNR GPS	940800240	Xi5 Mount	80	60"	Composite	56	24	Digital Variable
Xi5-105FW 48" 36V FP SNR GPS	940800280	Xi5 Mount	105	48"	Composite	41	36	Digital Variable
Xi5-105FW 54" 36V FP	940800130	Xi5 Mount	105	54"	Composite	41	36	Digital Variable
Xi5-105FW 54" 36V FP SNR GPS	940800250	Xi5 Mount	105	54"	Composite	41	36	Digital Variable
Xi5-105FW 60" 36V FP	940800140	Xi5 Mount	105	60"	Composite	41	36	Digital Variable
Xi5-105FW 60" 36V FP SNR GPS	940800260	Xi5 Mount	105	54"	Composite	41	36	Digital Variable
<b>WIRELESS DIGITAL SERIES ELECTRIC STEER BOW MOUNT</b>								
W45 48" 12V w/ Foot Pedal	970100360	Removable Mount	45	48"	Composite	38	12	Digital Variable
W55 48" 12V w/ Foot Pedal	970100020	Removable Mount	55	48"	Composite	52	12	Digital Variable
W55 54" 12V w/ Foot Pedal	970100030	Removable Mount	55	54"	Composite	52	12	Digital Variable
W55 60" 12V w/ Foot Pedal	970100060	Removable Mount	55	60"	Composite	52	12	Digital Variable
W75 54" 24V w/ Foot Pedal	970100040	Removable Mount	75	54"	Composite	42	24	Digital Variable
W75 60" 24V w/ Foot Pedal	970100050	Removable Mount	75	60"	Composite	42	24	Digital Variable
<b>R3 HAND-CONTROL TRANSOM MOUNT</b>								
R3-30 HT 30" 12V 03MT	940100170	#03 Transom	30	30"	Aluminum	36	12	5/2
R3-40 HT 36" 12V 03MT	940100160	#03 Transom	40	36"	Aluminum	43	12	5/2
R3-45 HT 36" 12V 09MT	940100150	#09 Transom Wide-Bite®	45	36"	Composite	44	12	5/2
R3-55 HT 36" 12V 09MT	940100140	#09 Transom Wide-Bite®	55	36"	Composite	49	12	5/2
R3-40 HT 36" 12V DIGITAL 03MT	940100200	#03 Transom	40	36"	Aluminum	43	12	Digital Variable
R3-45 HT 36" 12V DIGITAL 09MT	940100180	#09 Transom Wide-Bite®	45	36"	Composite	44	12	Digital Variable
R3-55 HT 36" 12V DIGITAL 09MT	940100190	#09 Transom Wide-Bite®	55	36"	Composite	49	12	Digital Variable
R3-55 HT 42" 12V DIGITAL 09MT	940100210	#09 Transom Wide-Bite®	55	42"	Composite	49	12	Digital Variable
<b>BULLDOG FOOT-CONTROL TRANSOM MOUNT</b>								
BULLDOG 40 30" 03MT	921500020	#09 Transom Wide-Bite®	40	30"	Aluminum	38	12	5
BULLDOG 54 30" 09MT	921500090	#09 Transom Wide-Bite®	54	30"	Aluminum	52	12	5





# MotorGuide Motor Selection Chart - Saltwater Motors

Model	Part Number	Mount	Peak Thrust	Shaft	Shaft Material	Max AMP Draw	Volts	Speed Control
<b>X3 HAND-CONTROL BOW MOUNT</b>								
X3-55SW 50" HB 12V DIGITAL, HAND	941300010	X3 Mount	55	50"	Composite	49	12	Digital Variable
<b>Xi5 WIRELESS ELECTRIC STEER BOW MOUNT</b>								
Xi5-55SW 48" 12V FOB	941700060	Xi5 Mount	55	48"	Composite	52	12	Digital Variable
Xi5-55SW 54" 12V FOB	941700070	Xi5 Mount	55	54"	Composite	52	12	Digital Variable
Xi5-80SW 54" 24V FOB	941700020	Xi5 Mount	80	54"	Composite	56	24	Digital Variable
Xi5-80SW 60" 24V FOB	941700030	Xi5 Mount	80	60"	Composite	56	24	Digital Variable
Xi5-105SW 54" 36V FOB	941700040	Xi5 Mount	105	54"	Composite	41	36	Digital Variable
Xi5-105SW 60" 36V FOB	941700050	Xi5 Mount	105	60"	Composite	41	36	Digital Variable
Xi5-55SW 54" 12V GPS	941700080	Xi5 Mount	55	54"	Composite	56	24	Digital Variable
Xi5-80SW 48" 24V GPS	941700110	Xi5 Mount	80	48"	Composite	52	12	Digital Variable
Xi5-80SW 60" 24V GPS	941700090	Xi5 Mount	80	60"	Composite	56	24	Digital Variable
Xi5-105SW 60" 36V GPS	941700100	Xi5 Mount	105	60"	Composite	41	36	Digital Variable
<b>GREAT WHITE DIGITAL HAND-CONTROL BOW MOUNT</b>								
SW82 HBV 50" 24V 21RMT	924410050	Gator Breakaway SW	82	50"	Stainless Steel	56	24	Digital Variable
SW82 HBV 60" 24V 24RMT	924410060	Gator Breakaway SW	82	60"	Stainless Steel	56	24	Digital Variable
SW109 HBV 50" 36V 21RMT	924410070	Gator Breakaway SW	109	50"	Stainless Steel	41	36	Digital Variable
SW109 HBV 60" 36V 24RMT	924410080	Gator Breakaway SW	109	60"	Stainless Steel	41	36	Digital Variable
<b>GREAT WHITE DIGITAL HAND-CONTROL TRANSOM MOUNT</b>								
SW82 HTV 45" 24V 09MT	9CT42KQAX	#09 Transom Wide-Bite	82	45"	Stainless Steel	56	24	Digital Variable
SW109 HTV 50" 36V 09MT	9CX53KQAX	#09 Transom Wide-Bite	109	50"	Stainless Steel	41	36	Digital Variable
<b>R3 HAND-CONTROL TRANSOM MOUNT</b>								
R3-45SW HT 18" 12V DIGITAL 09MT	941000030	#09 Transom Wide-Bite	45	18"	Composite	44	12	Digital Variable
R3-45SW HT 36" 12V DIGITAL 09MT	941000010	#09 Transom Wide-Bite	45	36"	Composite	44	12	Digital Variable
R3-55SW HT 36" 12V DIGITAL 09MT	941000020	#09 Transom Wide-Bite	55	36"	Composite	49	12	Digital Variable



Motor Directions	Directional Indicator	Steering	Propeller	Integrated Sonar	Pinpoint GPS	Pinpoint GPS Gateway	Battery Meter	Recommended Boat Length
Forward/Reverse	No	Twist/Extendable	3bl Machete	No	No	No	Yes	16'-19'
Forward	No	Wireless Remote	2bl Safari	No	Compatible	Compatible	Yes	14'-18'
Forward	No	Wireless Remote	2bl Safari	No	Compatible	Compatible	Yes	14'-18'
Forward	No	Wireless Remote	2bl Safari	No	Compatible	Compatible	Yes	17'-21'
Forward	No	Wireless Remote	2bl Safari	No	Compatible	Compatible	Yes	17'-21'
Forward	No	Wireless Remote	2bl Safari	No	Compatible	Compatible	Yes	20'-26'
Forward	No	Wireless Remote	2bl Safari	No	Compatible	Compatible	Yes	20'-26'
Forward	No	GPS Remote	2bl Safari	No	Yes	Compatible	Yes	17'-21'
Forward	No	GPS Remote	2bl Safari	No	Yes	Compatible	Yes	14'-18'
Forward	No	GPS Remote	2bl Safari	No	Yes	Compatible	Yes	17'-21'
Forward	No	GPS Remote	2bl Safari	No	Yes	Compatible	Yes	20'-26'
Forward/Reverse	No	Twist/Extendable	3bl Machete	No	No	No	No	18'-22'
Forward/Reverse	No	Twist/Extendable	3bl Machete	No	No	No	No	18'-22'
Forward/Reverse	No	Twist/Extendable	3bl Machete	No	No	No	No	20'-26'
Forward/Reverse	No	Twist/Extendable	3bl Machete	No	No	No	No	20'-26'
Forward/Reverse	No	Twist/Extendable	3bl Machete	No	No	No	No	18'-22'
Forward/Reverse	No	Twist/Extendable	3bl Machete	No	No	No	No	20'-26'
Forward/Reverse	No	Twist/Extendable	3bl Machete	No	No	No	Yes	8'-16'
Forward/Reverse	No	Twist/Extendable	3bl Machete	No	No	No	Yes	14'-18'
Forward/Reverse	No	Twist/Extendable	3bl Machete	No	No	No	Yes	16'-20'

Consumer Service: 1-920-929-5040

Eagle, HDS and Lowrance are registered trademarks of Navico. Garmin is a registered trademark of Garmin Ltd. MotorGuide, Great White, Mercury Marine, Mercury Propellers, Machete, and Pinpoint are registered trademarks of Brunswick Corporation. WideBite, and Bounce Buster are trademarks of Brunswick Corporation. Humminbird is a trademark of Johnson Outdoors, Inc. VELCRO is a registered trademark of Velcro Industries B.V. Vexilar is a registered trademark of Vexilar, Inc.

